

## REFLECTIONS . . . IN SPORTS



Football, basketball, baseball, tennis - all these offered the SHS athlete a varied program. The letter "S," worn proudly on jackets and sweaters, represented long afternoons of drill and practice. It represented charley horses and pulled muscles, broken bones and sore backs, smashed fingers and sprained ankles. But it, also, represented school spirit, self-sacrifice, teamwork and loyalty to SHS. The athletic field - as well as the classroom - was a place where character, mind and body were molded. The yell of cheerleaders . . . the bounce of a basketball . . . a cloud of dust over home plate . . . a smashing serve . . . are reflections of sports at SHS.



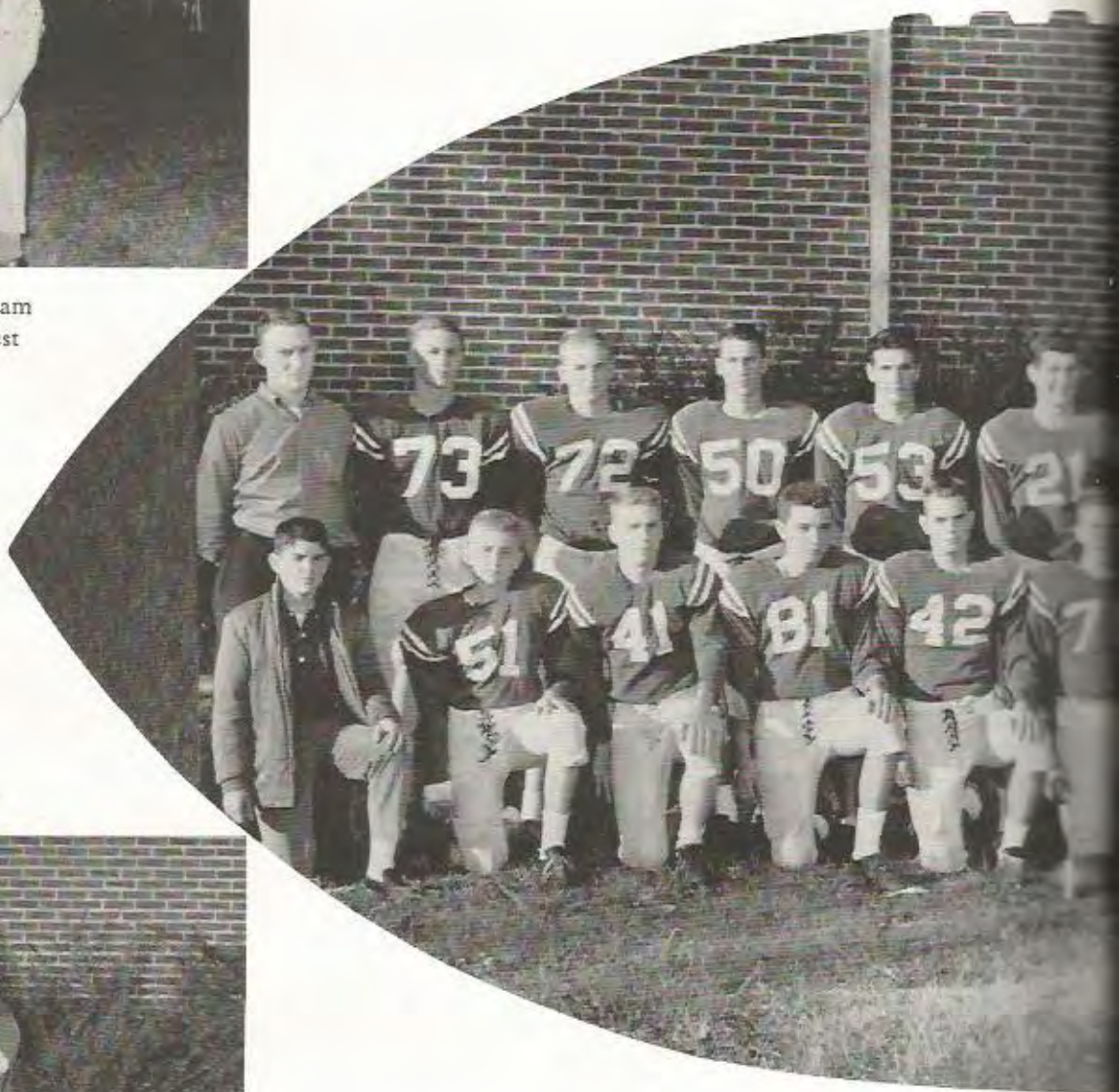


COACHES

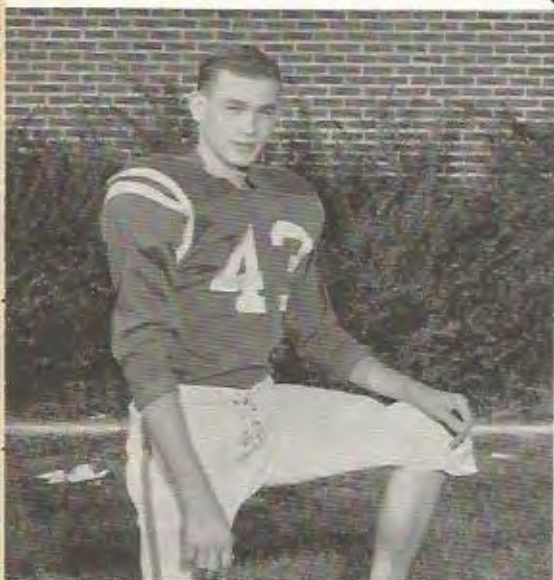


L. B. Chatham  
Sidney Priest

# VARSITY



CAPTAIN



Doyle McGovern



# FOOTBALL

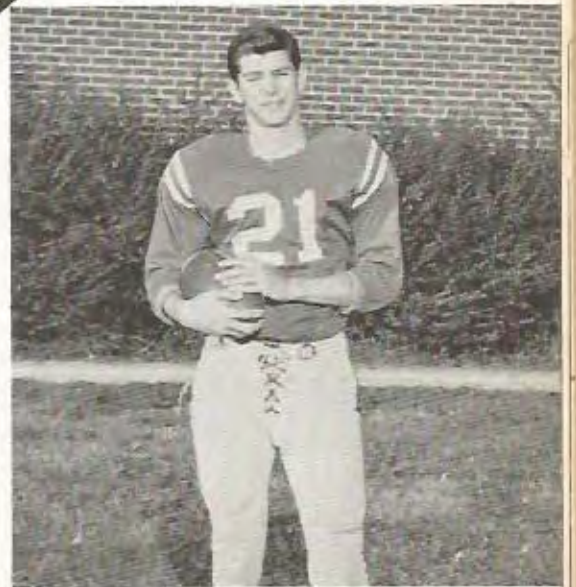
## MANAGERS



Max Abrams  
V. J. Philen



## CO-CAPTAIN

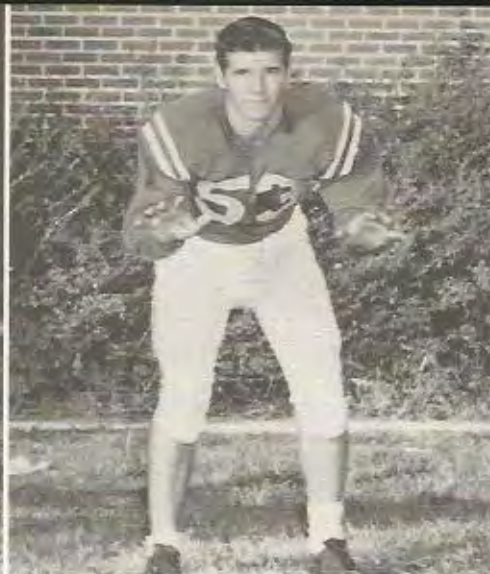


Joe Howard DePriest





ANDY BROOKS - End



BILLY JOHNSON - End



DICKIE BURNSIDE - End



CHARLES FOWLER - Back



HARMON FEATHER - Back



WILTON HOOD - Tackle



ALLEN YATES - Guard



R. E. BRANCH - Back



JOHNNY CAPECACCIA - Center





**BUDDY LONG - End**



**JOHN KINKADE - Guard**



**JOHNNY OLIVI - Guard**



**JIMMY PONGETTI - Back**



**JOE OLIVI - Back**



**TOMMY DEPRIEST - Back**



**BILLY ADAMS - End**



**RIVES NEBLETT - Back**



**JAMES BURRIS - Back**



# CHEERLEADERS



Barbara Butler, Brenda Williams, Margaret Reaves, Susan Hall, Linda Dilworth - HC



# HOMECOMING QUEEN



LINDA DILWORTH

## COURT



Johnny Olivi, Bobbie Jean McGovern, Wilton Hood, Susan Hall, Rives Neblett, Linda Dilworth, Joe Howard DePriest, Doyle McGovern, Jan Davis, Andy Brooks, Donna McLeary, Buddy Long, Melody Burke, Nelson Company.





BOBBIE JEAN McGOVERN



DONNA McLEARY



MELODY BURKE  
NELSON CAMPANY

SUSAN HALL

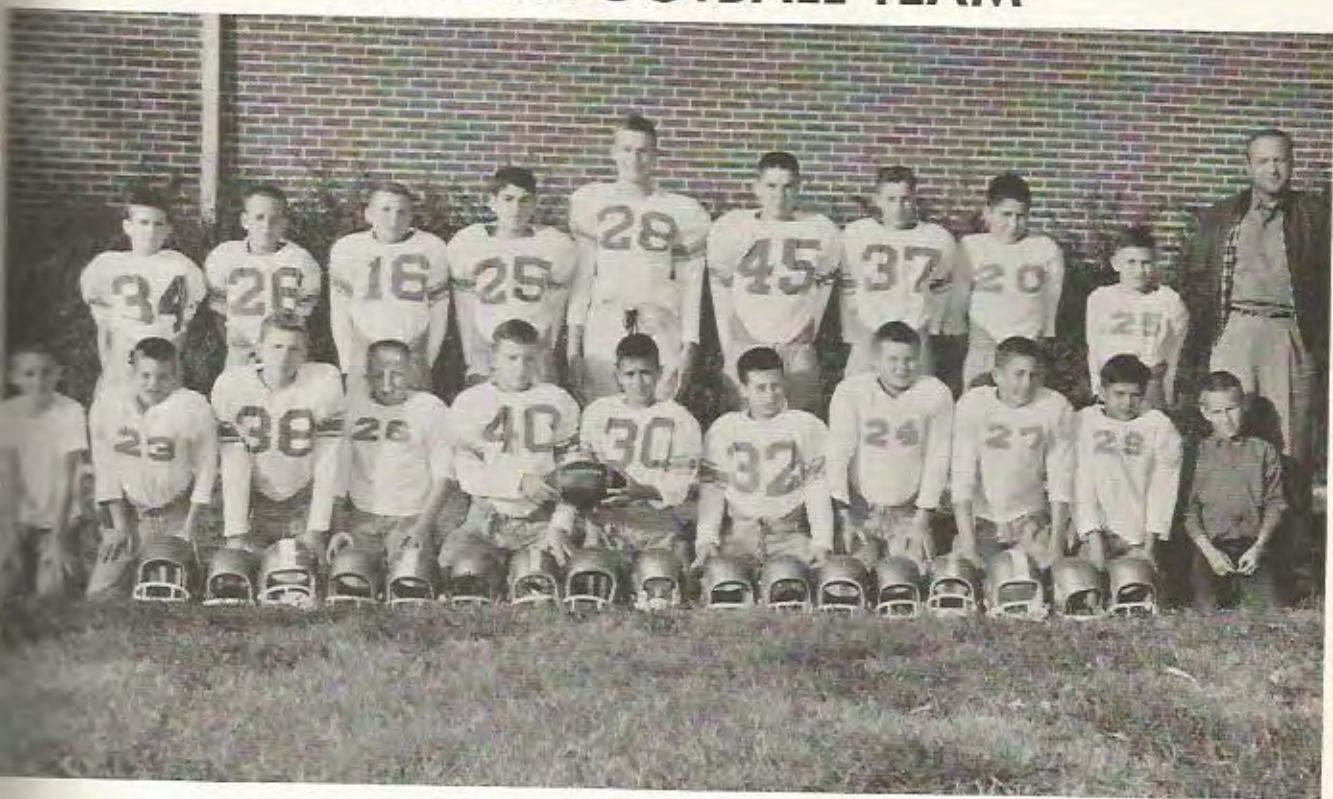


JAN DAVIS





## PEE WEE FOOTBALL TEAM



## PEE WEE CHEERLEADERS



Donna Sue Hatch, Susanne Hicks, Brenda Browning, Pauline Olivi, Theresa Swanson.



# BOYS' BASKETBALL



STANDING: Sonny Balducci, Tommy DePriest, Joe Howard DePriest, Doyle McGovern, R. E. Branch, Howard Abroms, Brownie Smith, Dickie Burnside, Jimmy Pongetti, Buddy Long. KNEELING: Coach Sid Priest.

COACH



Sid Priest

MANAGERS

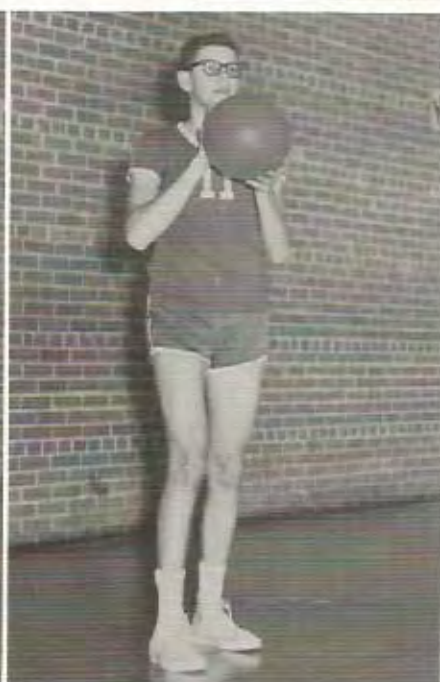


V. J. Philen - Max Abroms



DEPRIEST - G

McGOVERN - C



BURNSIDE - G

ABROMS - F

DEPRIEST - G

BRANCH - F





# GIRLS' BASKETBALL



STANDING: Mary Lou Hood, Carol Westbrook, Linda Hardin, Ann Peebles, Susan Hall, Reba Branch, Betty Jean Fowler, Eleanor Riley, Janie Radicioni, Bobbie Jean McGovern, Ann Olivi, Barbara Butler.  
KNEELING: Margaret Rose Reaves, Coach L. B. Chatham, Jan Davis.

## COACH



L. B. Chatham

## MANAGERS



Margaret Reaves - Jan Davis



RILEY - G

BUTLER - F



HALL - G

BRANCH - F

PEEPLES - G

HARDIN - F





## BASEBALL



## TENNIS





# GRID HIGHLIGHTS



"Tigers in prayer."



"Topsy turvy."



"He bit the dust!"



"On, on, Tigers."



"The faithful few."



"Go, Tigers, go."



"But he didn't make it!"



"Tiger boosters."



"The 'end' of that play"



"Senior Tigers."



"Hold that line!!!"



"Touchdown for Shelby!!!"



# SENIOR TIGER TALK OFFICERS BID FAREWELL



1960 was a big year on the Shelby High School campus. The staff of your '60 TIGER TALK hope that we have captured the spirit and activity of the year's events.

Looking back over all the aches and pains, we feel it was well worth it all to be able to give you, the students, what we think is the best yearbook ever. We have made many changes in the style of the book which we think adds much to it.

The book is finished - in it the memories of a year past. SHS bids farewell to those of us who must leave and then along with the freshmen, sophomores, and juniors, she settles down to dream of even better years to come!

JACK GAZELLE  
Editor

BARBARA BUTLER  
Business Manager

June 10, 1960



Compliments  
of

**DENTON MANUFACTURING CO.**

Shelby, Mississippi

**POWERS**

FASHION STORE OF THE DELTA

Clarksdale, Mississippi

Compliments  
of

**R. M. HENDRICK**

Manufacturer  
of Academic  
Caps and Gowns

Jackson, Mississippi

Compliments  
of

**ROBERTS' CHEVROLET**

"Sales and Service"

Shelby, Mississippi

Compliments  
of

**VALLEY GIN**

Shelby, Mississippi

Compliments  
of

**VALLEY PARTS**

Shelby, Miss.

Rosedale, Miss.



Congratulations to the Graduates

**COCA-COLA BOTTLING CO.**

of

Clarksdale, Mississippi

Compliments of

**SHELBY**

FEDERAL COMPRESS AND WAREHOUSE

Shelby

Mississippi

Congratulations  
to the  
Class  
of  
1960

Compliments of

**WILIES'**

Clarksdale, Mississippi

Compliments of

**JOE'S STEAK HOUSE**

Home of Fine Foods

Shelby, Mississippi





Christine Fava

## BRUNO'S SERVICE STATION

Alligator, Mississippi

COMPLIMENTS OF

# BANK OF BOLIVAR COUNTY

Member F. D. I. C.

Shelby, Mississippi

Compliments of

JAY'S

Cleveland, Miss.

Compliments of

THE KEEN FREEZE

Cleveland  
Mississippi

Compliments of

JIMMY SANDERS  
SEED CO.

Cleveland, Miss.



Compliments of  
AMOCO  
TRUCK STOP & CAFE  
Shelby, Mississippi

Compliments of  
LIBERTY  
CASH STORE  
Shelby, Mississippi

Compliments of  
RAIFORD CLEANERS  
Shelby, Mississippi

Compliments of  
SHELBY FEED CO.  
Shelby, Mississippi

Compliments of  
LOTT  
FLOWER AND ART SHOP  
Shelby, Mississippi  
Phone 7241

Compliments of  
SUPER SERVICE STATION  
Shelby, Mississippi

Compliments of  
LOTT  
COTTON CO.  
Phone 4241                      Shelby, Miss.

Compliments of  
SHELBY DRUG STORE  
Shelby, Mississippi

Compliments of  
ALLIGATOR CASH STORE  
Alligator, Mississippi

Compliments of  
TROUT SEED & FEED CO.  
Shelby, Mississippi

Compliments of  
CLARK'S DRUG STORE  
Merigold, Mississippi

Compliments of  
ROBERT'S INSURANCE AGENCY  
Shelby, Mississippi





Lon, Leslie, and Lynn McMurchy

## McMURCHY FARMS

Duncan, Mississippi

Compliments of

## ALLENDALE PLANTING CO.

Shelby, Mississippi

Compliments of

NELL'S BEAUTY SHOP

Clarksdale  
Mississippi

Compliments of

WEST IMPLEMENT CO.

John Deere Equipment

Cleveland  
Mississippi

Compliments of

WILSON BROTHERS  
INC.

Cleveland, Mississippi

Compliments  
of

**JAMES QUALITY MARKET**

Phone 5151  
Shelby, Mississippi

Compliments  
of

**SHELBY FARMS**

Shelby, Mississippi

Compliments  
of

**ALFRED BUTLER**

Shelby, Mississippi

Compliments  
of

**DR. H. J. GAZELLE**

Shelby, Mississippi

**BOLIVAR COUNTY  
CO-OPERATIVE (AAL)**

Insecticides

Batteries  
Grease

Oil

Phone 5651

Compliments  
of

**SHELBY GRAIN ELEVATOR**

Shelby, Mississippi





# HAYMON'S GULF SERVICE STATION

Shelby, Mississippi

"BROTHER" HAYMON

Call

**SHAW-SHELBY  
INSURANCE AGENCY**

Shelby, Mississippi

Compliments  
of

**A FRIEND**

## BOOSTERS

Compliments of  
MISSISSIPPI  
POWER AND LIGHT CO.  
Shelby, Mississippi

Lawrence Stokes  
Robert Kaplan  
E. L. McMurchy, Sr.  
Johnny Comfort  
T. L. Fullilove  
Rives Neblett  
Weller's Jewelry  
Watson's  
Robert Shull  
Larry Swanson  
Mr. Smith  
Vince's Cafe  
Susan Hall  
Barbara Butler  
Reba Branch  
Tony Pongetti  
R. E. Branch

Mr. Grice  
Tony's Ser. Sta.  
Fava Grocery  
Jack Wilkinson  
Billy McCausey  
"Doc" Wade  
Charlie Stelle  
Mr. Stephenson  
Peck Wilkinson  
Norman Johnson  
Cliff Stone  
Mike Sanders  
Butler Denton  
Jack Gazelle  
R. M. James  
Margaret Reaves  
Joe Howard

Compliments of  
MIKE'S GROCERY  
Shelby, Mississippi

Compliments of  
TEXACO CO.  
C. M. SHAW, Owner  
Shelby, Mississippi

Compliments of  
PAT THOMAS  
Shelby, Mississippi

Compliments of  
JOHN FLAUTT  
Shelby, Mississippi

Compliments of  
SING GONG CO.  
Shelby, Mississippi

Compliments of  
PRIMO'S SAVINGS STORE  
Shelby, Mississippi

Compliments of  
FERRETTI'S BUILDING MATERIALS  
Shelby, Mississippi

Compliments of  
ERWIN'S TV AND RADIO SHOP  
Shelby, Mississippi

Compliments of  
BOLIVAR HARDWARE  
Shelby, Mississippi



**A. M. WOOTEN**

AND COMPANY

MARYLAND PLANTATION

WALLACE WOOTEN  
Owner

C. P. GODBOLD  
Manager

Shelby, Mississippi

**McKINNEY WELDING SHOP**

J. R. (ROLEN) McKINNEY

"ALL WORK SATISFACTION GUARANTEED"

Office Phone-4561

Home Phone-7171

Compliments of

**MERLE NORMAN STUDIO**

Cleveland, Mississippi

Compliments of

**PAUL'S JEWELRY**

Cleveland, Mississippi

Compliments of

**L AND A  
FURNITURE COMPANY**

Cleveland, Mississippi

Compliments of

**OWEN'S DRUG STORE**

Cleveland, Mississippi