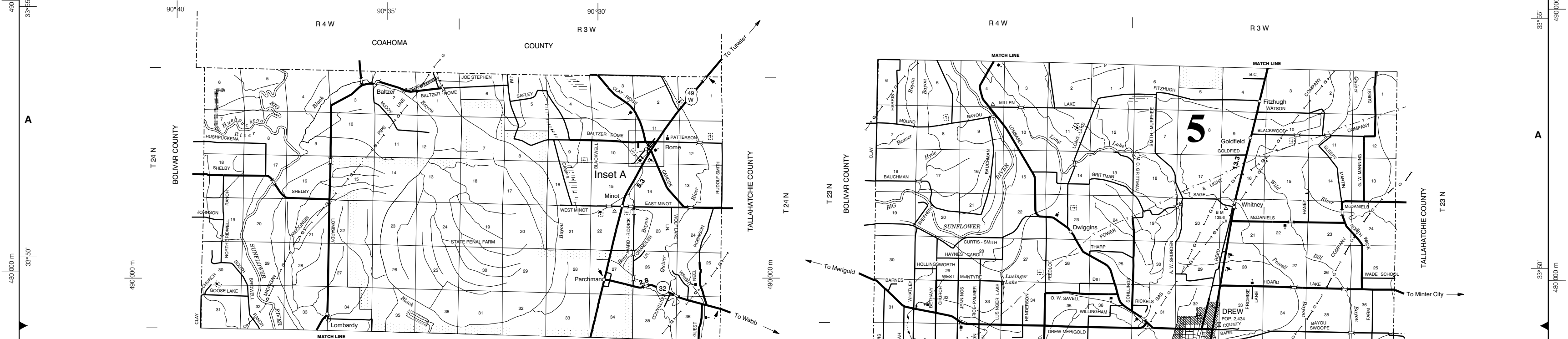
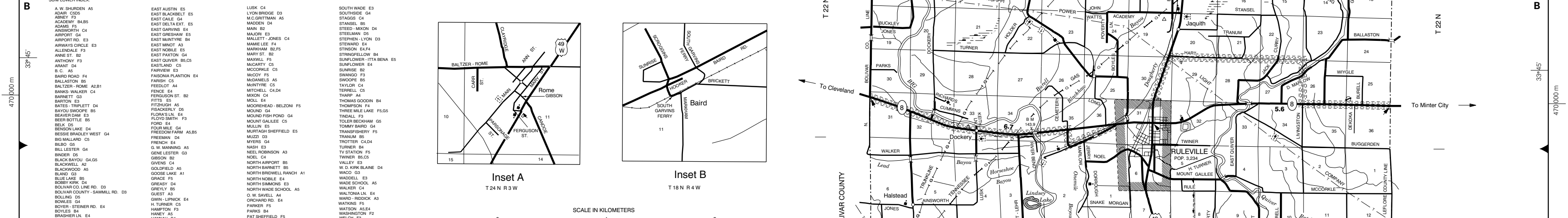


640'000m 660'000m 680'000m 690'000m 670'000m 680'000m 690'000m 690'000m 690'000m

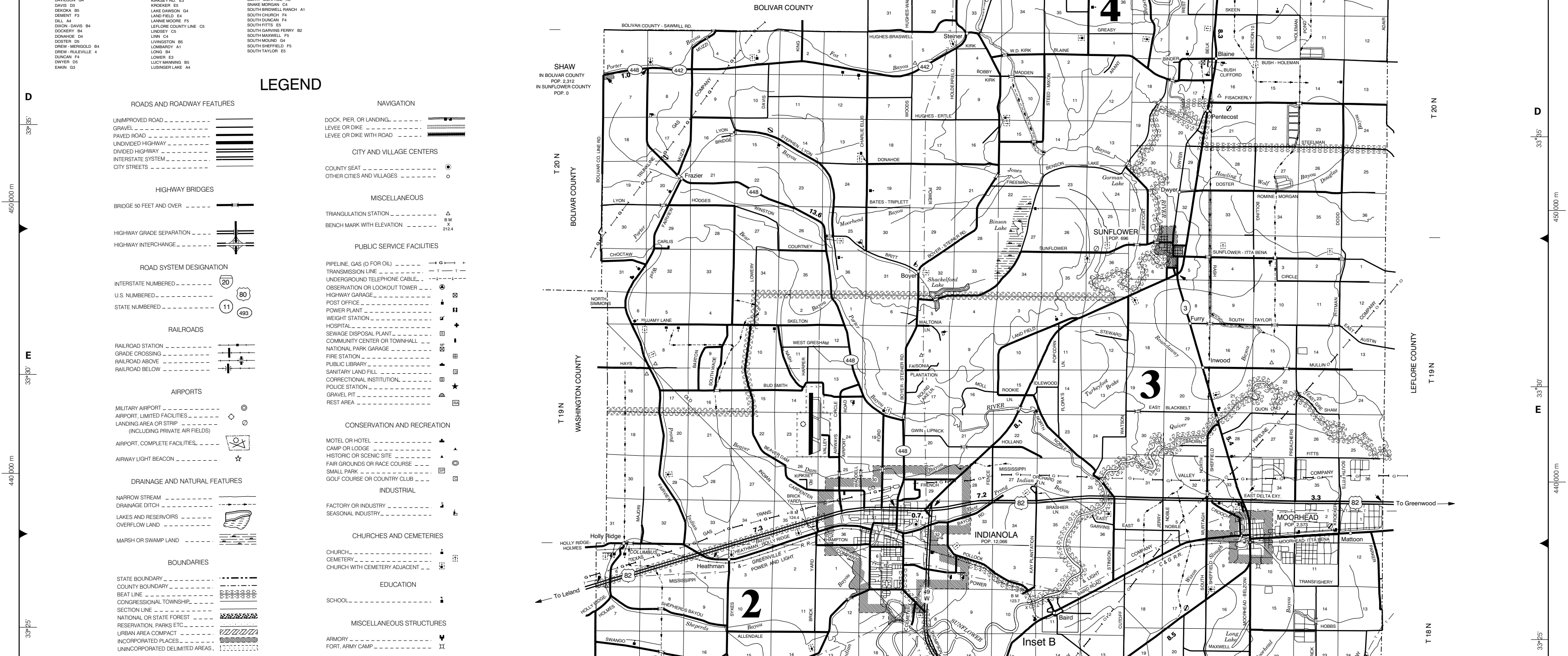
1 2 3 4 5 6 90°55' 90°50' 90°45' 90°40' 90°35' 90°30'



R 4 W COAHOMA R 3 W COUNTY BOLIVAR COUNTY T 24 N BOLIVAR COUNTY TALAHACHE COUNTY T 24 N BOLIVAR COUNTY TALAHACHE COUNTY



R 4 W R 3 W COUNTY BOLIVAR COUNTY T 24 N BOLIVAR COUNTY TALAHACHE COUNTY T 23 N BOLIVAR COUNTY TALAHACHE COUNTY T 22 N BOLIVAR COUNTY TALAHACHE COUNTY



**GENERAL HIGHWAY MAP**  
**SUNFLOWER COUNTY**  
**MISSISSIPPI**  
© 2002  
REVISED: 10 / 2002  
MISSISSIPPI DEPARTMENT OF TRANSPORTATION  
PLANNING DIVISION  
IN COOPERATION WITH THE  
U.S. DEPARTMENT OF TRANSPORTATION  
FEDERAL HIGHWAY ADMINISTRATION  
TRANSVERSE MERCATOR PROJECTION,  
STATE PLANE COORDINATE SYSTEM 1983

**LEGEND**

**ROADS AND ROADWAY FEATURES**

- UNIMPROVED ROAD
- GRAVEL
- PAVED ROAD
- LANKED HIGHWAY
- DIVIDED HIGHWAY
- INTERSTATE SYSTEM
- CITY STREETS

**ROAD SYSTEM DESIGNATION**

- INTERSTATE NUMBERED
- U.S. NUMBERED
- STATE NUMBERED

**RAILROADS**

- RAILROAD STATION
- GRADE CROSSING
- LANKED HIGHWAY
- RAILROAD BELOW

**AIRPORTS**

- MILITARY AIRPORT
- AIRPORT LIMITED FACILITIES
- LANDING AREA OR STRIP
- AIRPORT COMPLETE FACILITIES
- AIRWAY LIGHT BEACON

**DRAINAGE AND NATURAL FEATURES**

- NARROW STREAM
- DRAINAGE STATION
- RAILROAD ABOVE
- CONCRESSIONAL TOWNSHIP
- NATIONAL OR STATE FOREST
- RESERVATION PARKS ETC.
- URBAN AREA COMPACT
- INCORPORATED PLACES
- UNINCORPORATED DELINEATED AREAS

**BOUNDARIES**

- STATE BOUNDARY
- COUNTY BOUNDARY
- BEAT LINE
- SECTION LINE

**CHURCHES AND CEMETERIES**

- CHURCH
- CEMETERY
- CHURCH WITH CEMETERY ADJACENT

**EDUCATION**

- SCHOOL

**NAVIGATION**

- DOCK, PIER, OR LANDING
- LEVEE OR DIKE
- LEVEE OR DIKE WITH ROAD

**CITY AND VILLAGE CENTERS**

- COUNTY SEAT
- OTHER CITIES AND VILLAGES

**MISCELLANEOUS**

- TRIANGULATION STATION
- BENCH MARK WITH ELEVATION

**PUBLIC SERVICE FACILITIES**

- PIPELINE GAS (D FOR OIL)
- TRANSMISSION LINE
- UNDERGROUND TELEPHONE CABLE
- OBSERVATION OR LOOKOUT TOWER
- HIGHWAY GARAGE
- POWER PLANT
- WEIGHT STATION
- HOSPITAL
- SEWAGE DISPOSAL PLANT
- COMMUNITY CENTER OR TOWNHALL
- NATIONAL PARK GARAGE
- FIRE STATION
- PUBLIC LIBRARY
- SANITARY LAND FILL
- CORRECTIONAL INSTITUTION
- POLICE STATION
- GRAVEYARD
- REST AREA

**CONSERVATION AND RECREATION**

- MOTEL OR HOTEL
- CAMP OR LODGE
- HISTORIC OR SCENIC SITE
- FAR GROUNDS OR RACE COURSE
- SMALL PARK
- BOAT COURSE OR COUNTRY CLUB

**INDUSTRIAL**

- FACTORY OR INDUSTRY
- SEASONAL INDUSTRY

**MISCELLANEOUS STRUCTURES**

- CHURCH
- CEMETERY
- SCHOOL
- ARMORY
- FORT, ARMY CAMP

**SCALE IN KILOMETERS**

**SCALE IN MILES**

MISSISSIPPI DEPARTMENT OF TRANSPORTATION  
COPYRIGHT 2002 AGREEMENT

**DATA SOURCES**

- 1985 ASCS AERIAL PHOTOS
- 1987 USGS DLG
- 1988 MDT FIELD INVENTORY
- 2000 POPULATION 34,369
- 1987 BEAT LINES

**THIS MAP WAS COMPUTER GENERATED**